

## Deliverables

- Point Cloud Images



- Site Plans

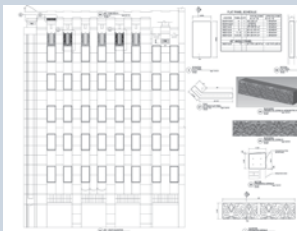
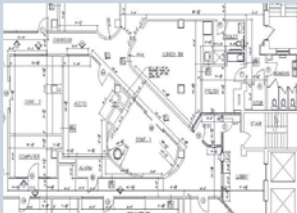
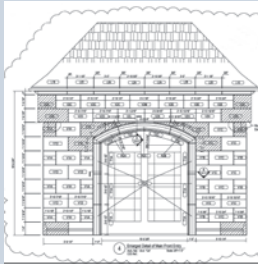


- Three-dimensional Models



- Architectural Plans:

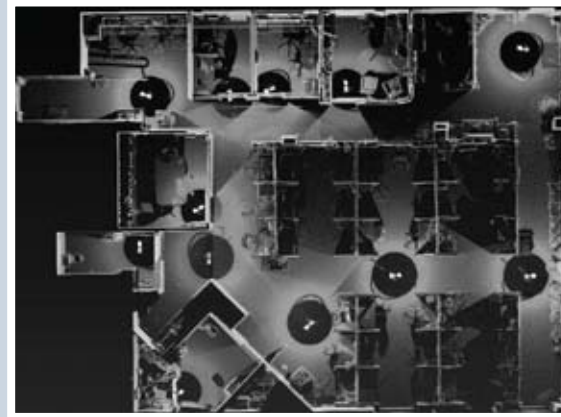
- Elevations
- Floor plans
- Reflected ceiling plans
- Shop drawings



## Real Estate

Corinthian Data Capture can make managing your properties a breeze, indisputable documentation of your property in a format easily readable for owners, clients, and managers.

- Certify square footage of building
- Record pre-rental conditions
- Document usable space
- Spatial planning
- Site visits for prospective renters and buyers
- Create accurate floor plans



 **CORINTHIAN  
DATA CAPTURE, LLC**

**Three Dimensional  
Laser Scanning Services**

115 Wyandanch Ave.  
Wyandanch, New York 11798

[www.corinthiandatacapture.com](http://www.corinthiandatacapture.com)  
**631.920.2340**

# laser scanning

Three Dimensional  
Laser Scanning  
Services

 **CORINTHIAN  
DATA CAPTURE, LLC**

# Construction and Planning

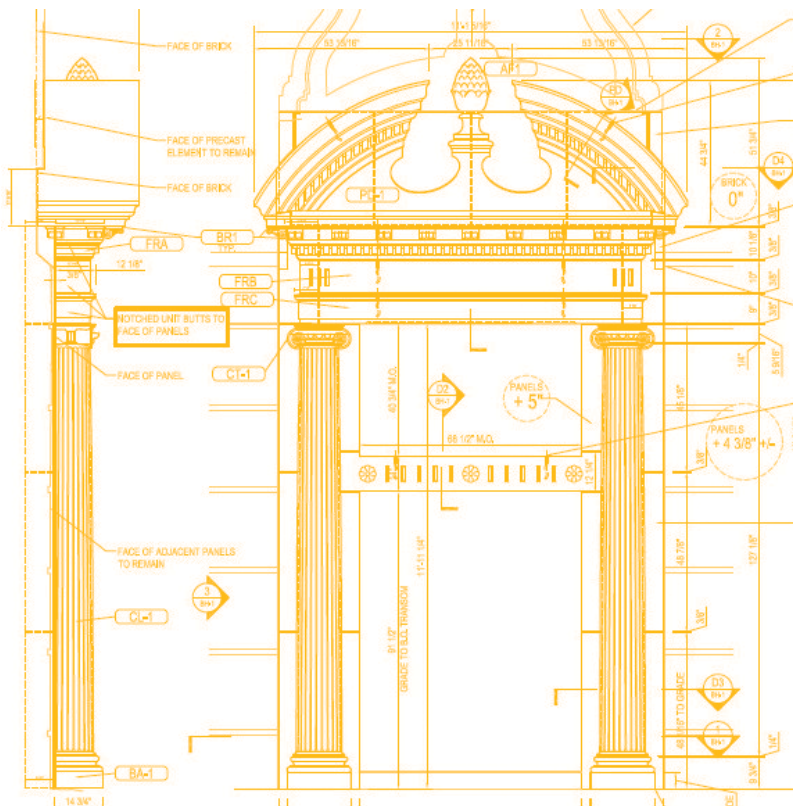
Scan data can be incorporated into every step of the design-build process.

## Design...

- Integrate existing as-builts conditions with BIM
- Record preconstruction site and surrounding property conditions
- Create a hologram model of proposed work
- GIS location

## Build...

- Create as-built documentation
- Elevations
- Reflected ceiling plans
- Floor plans
- Site plans
- Sections
- Clash detection
- Create security/safety plans of work site
- Construction Scheduling

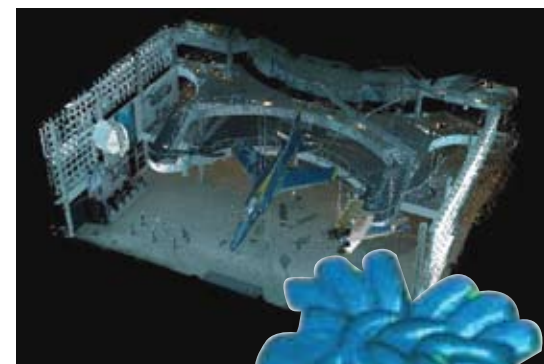


# Historic Structures

- Recreate architectural details
- Document elevations and façade
- Archival record of building
- Create fly through of site
- Create HABS documents
- Virtual inventory

## Museums...

- Spatial exhibit and event planning
- Insurance documentation
- Access for off-site researchers
- Virtual Tours of exhibits
- Digital archival record of artifacts, building, and exhibits



## How It Works:

Corinthian Data Capture owns and operates both long range and hand held scanners which are used to capture digital data in a precise, efficient, and highly accurate methodology.

Scan data is comprised of millions of points, which make a point cloud, every point is assigned an x, y, z value which are then combined create a 3D virtual model of the scanned subject.

Our scanners are capable of scanning details as small as a 1/2 millimeter or as large as a cathedral.

**Call Corinthian Data Capture today for a  
FREE ESTIMATE at 631.920.2340**

