

3D Laser Scanning

Corinthian Data Capture 3D Laser Scanning Services

3D Laser Scanning

the process of graphically capturing as-built physical elements of an object, facility or area and applying surveyed information to each visible point. *(Spar Point Research, 2010)*

Industries Served:

Architecture & Engineering

- Reverse Engineering
- BIM models
- CAD elevations & plans
- As-built Documentation
- Construction Clash Identification

Accident & Forensics Investigation

- Visual Reconstructions
- Crime Scene Documentation

Construction

- Trade Coordination
- Shop Drawings
- Document Preconstruction Site Conditions
- Remote Site Examination

Heritage & Landmark Sites

- Non-Invasively Record Ornamental Details
- Archival Record
- Document Existing Conditions
- HABS documentation
- Insurance Documentation
- Virtual Tours
- Replicas of Artifacts

Real Estate

- Certify Square Footage
- Record Pre-Rental Conditions
- Spatial Planning

Corinthian Data Capture's unique blend of technology and professional expertise offers a service that allows all companies to benefit from enhanced operational support and reliable information.

Contact Corinthian Data Capture today to learn how we can help you save time and money on your next project.

 **CORINTHIAN DATA CAPTURE, LLC** 115 Wyandanch Ave.
Wyandanch, NY 11798
Fax 631.920.2343
631.920.2340 • www.corinthiandatacapture.com

The Corinthian family of companies. Delivering Quality without Compromise. www.corinthian-usa.com

 **CORINTHIAN CAST STONE, INC.**
www.corinthiancaststone.com

 **CORINTHIAN BUILDING MATERIALS**
www.corinthianbuildingmaterials.com

 **CORINTHIAN DATA CAPTURE, LLC**
www.corinthiandatacapture.com

LASER TECHNOLOGY BUILDING DOCUMENTATION SPECIALISTS

data capture



Exterior Scanning for Architectural Details

Hempstead House
Sands Point, NY

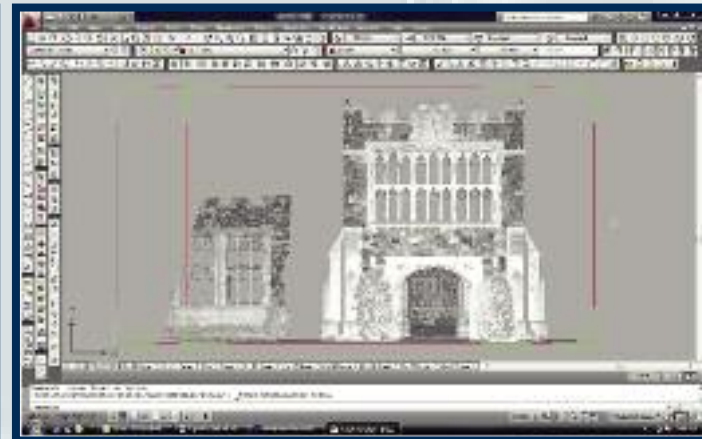
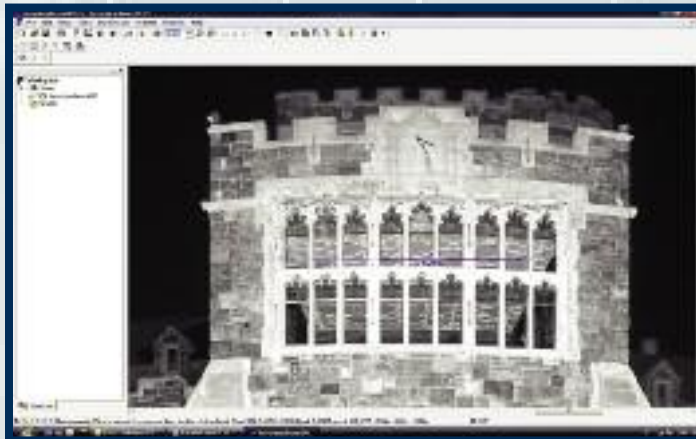


 **CORINTHIAN DATA CAPTURE, LLC**
631.920.2340
www.corinthiandatacapture.com



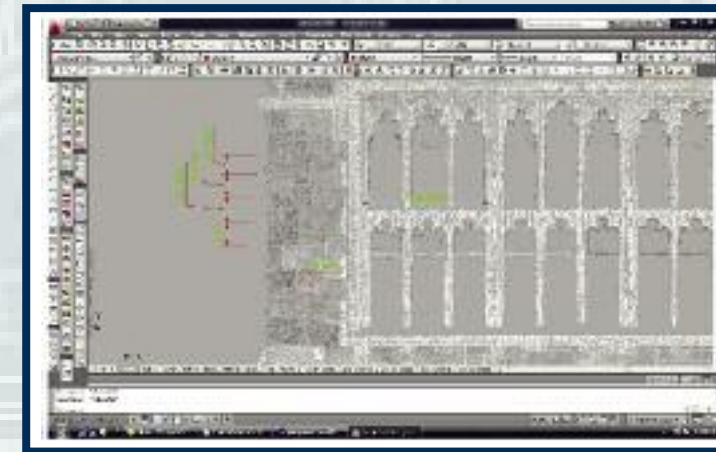
The scanner is setup outside the building, and once activated, scans a 360 degree area, often capturing the whole width of the building in a single scan.

This planar view shows the area of scan that captured the building.

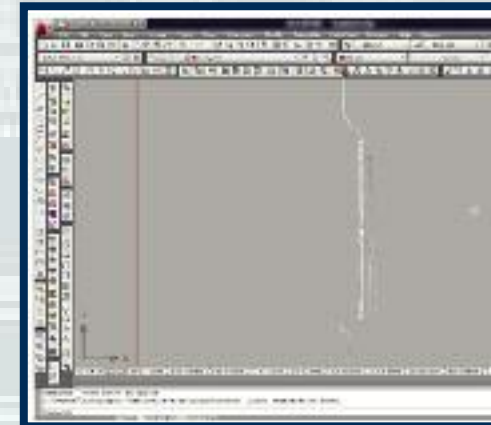


Elevation datums and dimensions can be accessed in this view, allowing study of the façade elements.

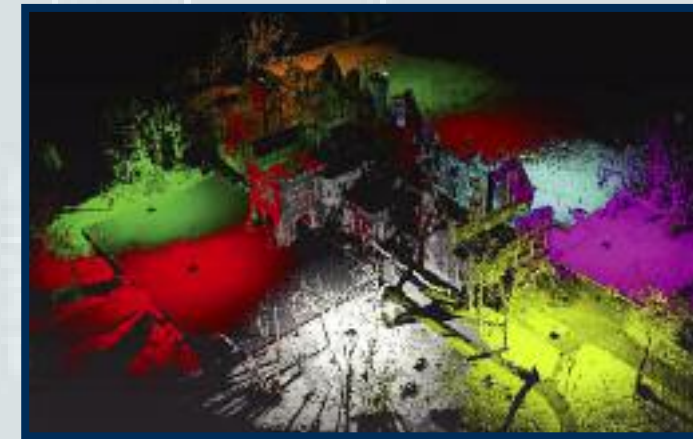
The elevation can be imported into a CAD drawing, for development of as-built construction or design documents



A closer view reveals details, and precise dimensions can be determined for the façade's masonry and ornamentation. CAD drawing overlays can begin to form as-built or shop drawings for replacement parts.



A slice through the windows, turned 90 degrees, reveals the profile of the stone window surrounds and ornamental molding.



Multiple scans of the building can be aligned, creating a 3D image useful for study and animation graphics. Each scan in this picture is shown in a separate color, overlapping of scans increases accuracy of data.



The resulting 3D image can be viewed from any angle, providing a digital database of the building for archive and future reference use in restoration and repair programs.